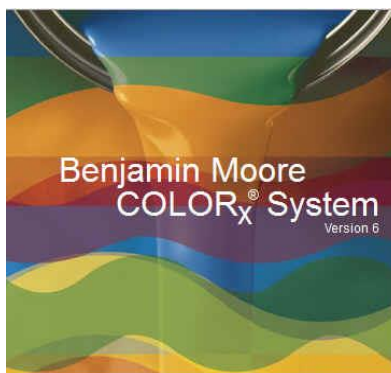


Benjamin Moore & Co. Moore's COLOR_x® System Release Notes & Installation Guide Version 6.30.4000



COLOR_x version 6.30.4000 contains new and updated Benjamin Moore prescriptions. For a complete list of updated prescriptions, see page 4.

Benjamin Moore Dry Fall Products - 1 Base only (U.S. & Canada)

Prescriptions and color matching capabilities for products 395, 396, 397; K395; K396; K397

Updated Benjamin Moore Color Names

A large number of color names had grammatical corrections in English, French, and Spanish across a number of fandecks to better match upcoming merchandise.

New Feature for Similar Color Names

COLOR_x will now alert retailers to a similar color name in the system when they do a color search to help retrieve the intended formula. See page 3 for details.

New Competitive Color Collections

The following color collections have been added to this release of COLOR_x.

- 1 - Pratt & Lambert Coastal Legacy
- 2 - Pratt & Lambert Homes in Harmony

Help

While in the COLOR_x application, you can view the Operator's Manual and the Quick Start Guide by clicking on Help, then choose COLOR_x Help for the manual or COLOR_x Quick Start.

Competitive Color Prescriptions

We have amassed an extensive collection of colors from our competitor's color merchandise. This information is available in our Color Search option in COLOR_x. To see if a color exists, simply follow the same procedure you would for a Benjamin Moore color. Enter a color number or name, along with a product, and either select an individual company or check the "Search All" box above the Select Company drop down list.

Unlike a Benjamin Moore color which displays a prescription created and tested by our Color Prescribing Lab, we store just the measurement of the competitive color. That measurement is run in our color matching application to generate a color prescription the same as if you measured a custom color with a spectrophotometer and calculated a match.

Therefore, when a customer requests a match to a competitive color, a retailer should follow this procedure. First, look up the color in COLOR_x and determine if we have it in our system. If it is, a prescription will be calculated and displayed. Click on the button “Closest BM Color”, this will list the five closest Benjamin Moore colors. Suggest to the customer that they look at our closest colors and see if that meets their color requirements. This has two benefits, if the color is acceptable, then you have a tested Benjamin Moore prescription to make the color and you have changed a competitive color specification to a Benjamin Moore color specification.

Second, if you or the customer has a sample of the competitive color merchandise then match the color merchandise just as you would match a custom color. Since the customer will be judging the color to the merchandise sample that should be your target. Depending on the age and condition of the merchandise, it may not represent what we have stored in COLOR_x.

Finally, if the customer does not like our closest color and no sample of the color is available then use the calculated match in COLOR_x.

If you have any questions, please contact your Color Technology Rep. or call 800-809-9213.

Best Practices for Retail Color Matching with Benjamin Moore Color Systems

It is important to use the proper mix of colorants to achieve the best performance for a particular color. The colorants selected for a specific color can make a significant difference in the following product properties.

- Appearance
- Color-match in different lighting
- Hide
- Durability
- Ease of reproducibility

When matching colors, there are a few important points to remember. The following guidelines will assist in cost savings and enhance the durability of custom mixed colors:

- Use the COLOR_x software to develop color matches; it will select the best colorant combinations to achieve a given color.
- Follow the recommended maximum colorant addition for each base; over tinting will hurt performance.
- If you match by “eye,” start with a system color that is visually close to the desired target and use the same colorants to adjust.
- Most colors can be achieved with up to three colorants, plus white if needed. While a mixture of many colorants can be used artistically to create interesting “full spectrum” colors, the risk of encountering problems is high. Using the minimum number of colorants to make a color can help to avoid creating colors that appear too neutral and difficult to reproduce. White can be added to any prescription to lighten a color.
- Because the pigments used to produce colorants have different performance characteristics, use the following guidelines to get the best combination for performance in both Gennex and Color Preview colorants.
 - First choice colorants
 - Oxide Yellow (Y3, OY)
 - Oxide Red (R3, RX)
 - Black and Gray (S1, BK and S2, GY)
 - White (W1, WH)
 - To adjust tone or when the basic color requires it
 - Thalo Blue (B1, BB)
 - Thalo Green (G1, TG)
 - Magenta (M1, MA)

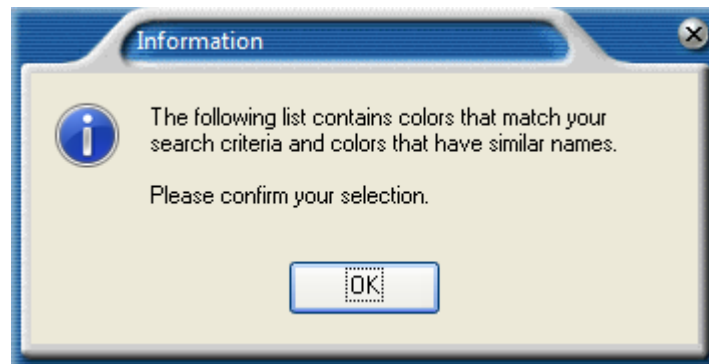
- When needed to achieve color or tone
- Yellow (Y1, Y2, YW)
- Red (R2, RD)
- Orange (O1, OG)
- For exterior products, avoid opponent color matches that use Yellow (Y1, YW) and Red (R2, RD) colorants in combination with Green (G1, TG) or Blue (B1, BB) colorants. Since these combinations result in gray, use Black (S1, BK) or Gray (S2, GY) instead.
- Avoid using Orange (O1, OG) in exterior products.
- Avoid using Green (G1, TG) with Orange (O1, OG) or Red (R2, RD.)
- Avoid using Yellow (Y1, Y2, YW) or Orange (O1, OG) with Blue (B1, BB.)

Similar Color Names

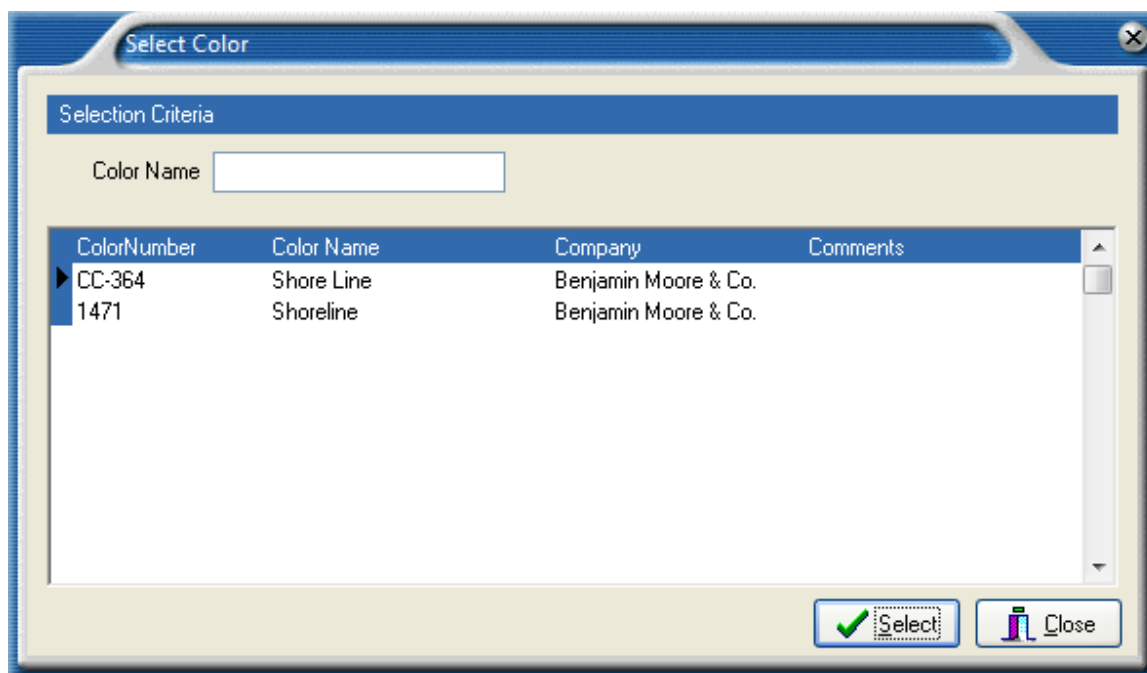
COLOR_x will now alert retailers trying to retrieve a formula for thirteen pairs of colors that sound similar to another color in the system to ensure they are getting the formula of the intended color. The colors that will trigger this alert are listed in the following table:

Buttermilk	Butter Milk
Cloud White	White Cloud
Eucalyptus	Eucalyptus Leaf
Leather Saddle Brown	Saddle Brown
Moonlight White	Moonlight
Nimbus	Nimbus Gray
Pink Eraser	Eraser Pink
Rolling Hills	Rolling Hill Green
Shoreline	Shore Line
Sweet 16	Sweet 16 Pink
Timber Wolf	Gray Timber Wolf
Wildflowers	Wild Flower
Wythe Blue	Williamsburg Wythe Blue

If one of the colors listed above is entered into the Enter Color Number or Name field in Quick Color Search, the following message will appear:



When the user clicks “OK” to acknowledge this message, he or she can then choose the intended color from this window:



In this example, COLOR_x contains a color named “Shore Line” as well as one named “Shoreline”. They are two distinct colors and can be mistaken for each other. This new feature will allow the retailer to select the correct one. If the color is search by color number, COLOR_x will function as it did previously and retrieve the formula for the entered color number.

Prescription Changes since COLOR_x Version 6.30.3000 (United States)

Colors 159, 2108-20, 2108-60, 2109-40, and 2134-40 have been modified in numerous products. Please refer to the revision date when calling up prescriptions for these products. A revision date after 8/13/2015 indicates a change in the prescription since COLOR_x version 6.30.3000.

A prescription has been added for color PM-2 in product V342.

The following prescription has been modified for product 522: 2168-30.

The following prescription has been modified for product 548: 2107-20.

The following prescription has been modified for product 549: 2111-20.

The following prescription has been modified for product 632: HC-166.

The following prescriptions have been modified for product 792: 2107-40, 2139-30, and AF-10.

The following prescription has been modified for product N401: 2130-10.

The following prescription has been modified for product N447: 2135-20.

The following prescription has been modified for product N537: 2112-40.

The following prescriptions have been modified for product N538: 200 and HC-12.

The following prescription has been modified for product W105: Red Brick.

The following prescription has been modified for product W625: AF-90.

Prescription Changes since COLOR_x Version 6.30.3000 (Canada)

Colors 2108-20, 2108-60, 2109-40, & 2134-40 have been modified in numerous products. Please refer to the revision date when calling up prescriptions for these products. A revision date after 8/13/2015 indicates a change in the prescription since COLOR_x version 6.30.3000.

A prescription has been added for PM-2 in product V342.

The following prescription has been modified for product K401: 2130-10.

The following prescription has been modified for product K447: 2135-20.

The following prescription has been modified for product K522: 2168-30.

The following prescription has been modified for product K537: 2112-40.

The following prescription has been modified for product K538: HC-12.

The following prescription has been modified for product K549: 2111-20.

The following prescription has been modified for product K625: AF-90.

The following prescription has been modified for product K632: HC-166.

The following prescriptions have been modified for product K792: 2107-40, 2139-30, and AF-10.

Moore's COLOR_x® System Installation Guide

The Benjamin Moore COLOR_x Prescription Book and Color Matching System programs are incorporated into a single software package. It is available on the Benjamin Moore Retailer Portal, Mybenjaminmoore.com and runs under the Windows® XP, Windows® Vista, Windows® 7, and Windows® 8 operating systems.

Minimum System Requirements

- Intel Pentium® processor 500 MHz or higher.
- 1 GB of RAM
- 750 MB of free hard disk space.
- CD or DVD Drive
- Video card capable of supporting 16M colors
- Printer
- Serial or USB port for spectrophotometer
- Windows® XP, Windows® Vista, Windows® 7 or Windows® 8

Installation

If you are downloading COLOR_x from the Benjamin Moore Retailer Portal, mybenjaminmoore.com, read the "COLOR_x Download Instructions." This will instruct you how to download and install COLOR_x on your computer.

To install COLOR_x from a CD, you must have the Windows desktop displayed. If there are any other applications running, they should be closed before attempting to install the program. If your system has any automatic virus detection software enabled, it should be disabled before installing.

Insert the CD labeled "COLOR_x System" into the CD drive.

The installation procedure will automatically start and bring you to the **Welcome Screen**.

If the installation does not automatically start, click on the "Start" button, usually found at the lower left corner of the screen. The primary menu will pop up. Click on "Run..." and the "Run" dialog box will display. Type "**D:\SETUP**" (where "**D:**" is the designated drive letter for the CD) on the "Open" line and click on "OK".

The Setup Wizard will guide you through the installation.

License Agreement

As you start the installation, the License Agreement screen appears. Be sure to read this license agreement. If you disagree with the terms of the agreement, then click on the Cancel button to exit the installation. If you agree with the terms, then check the appropriate box to continue the installation. The installation will prompt you to select the software region, United States or Canada. The default is United States.

After the successful installation of the software you may be prompted to reboot your system.

Note: If you have a previous version of COLOR_x® 6, this installation will not write over any stored samples or stored customers. They can be still be accessed.